

Seismic Interpretation  
based on reflectivity  
(no reflectivity log  
available for this well)

Petrophysical  
Evaluation

Samples

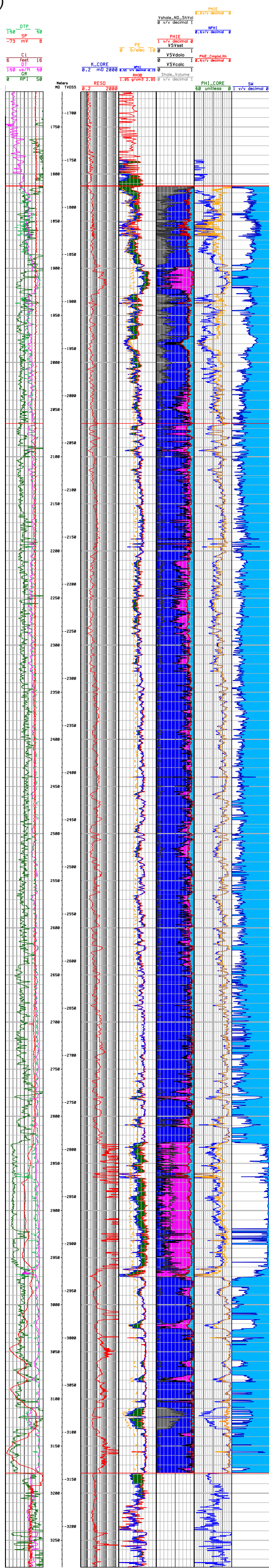
Sedimentological Data  
(adapted from GeoTours Consulting Inc.)

Stratigraphic Breakdown

Seismic  
horizon  
J150

Seismic  
horizon  
Bac-4

Seismic  
horizon  
Bac-1/2



Lost circulation below 2925m MD

Facies Associations  
G F E D C B A

MFS-9 (2090m MD)  
SB-8 (2095m MD)

MFS-8 (2185m MD)  
SB-7 (2195m MD)

MFS-7 (2247m MD)  
SB-6 (2255m MD)

MFS-6 (2312m MD)  
SB-5 (2322m MD)

MFS-5 (2405m MD)

SB-4 (2450m MD)

MFS-4 (2635m MD)

SB-3 (2720m MD)

MFS-3 (2930m MD)

SB-2 (2970m MD)

MFS-2 (3117m MD)

SB-1 (3140m MD)

MFS-1 (3225m MD)

PETROPHYSICAL EVALUATION

- Sandstone
- Claystone
- Limestone
- Dolomite
- Porosity

FACIES ASSOCIATIONS

- G1 - Shallow-water siliciclastics (delta to prodelta)
- G2 - Muddy (lagoon) platform interior
- F - Mixed carbonate-siliciclastic platform interior
- E - High-energy oolitic sand shoals
- D - "Clear" shallow-water corallgal reef margin
- C1 - "Turbid" shallow-water sponge reef mounds
- C - Proximal foreslope
- B - Distal foreslope
- A - Deep marine shelf

SEQUENCE STRATIGRAPHIC BREAKDOWN

- MFS - Maximum Flooding Surface
- SB - Sequence Boundary
- MFS - Maximum Flooding Surface